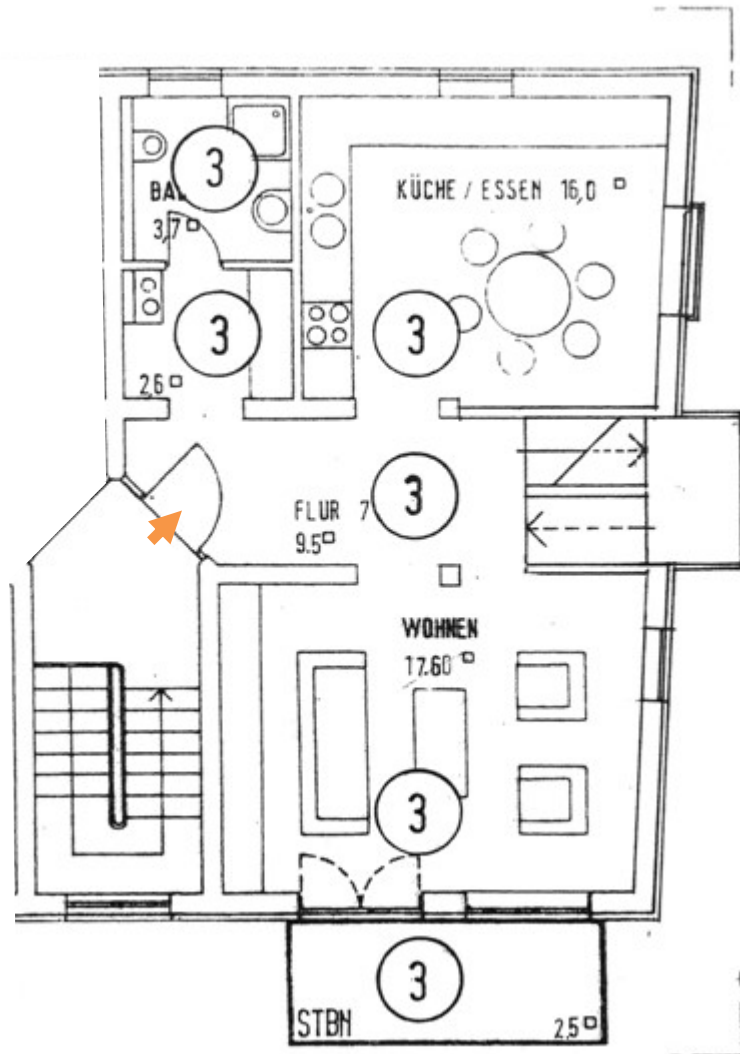
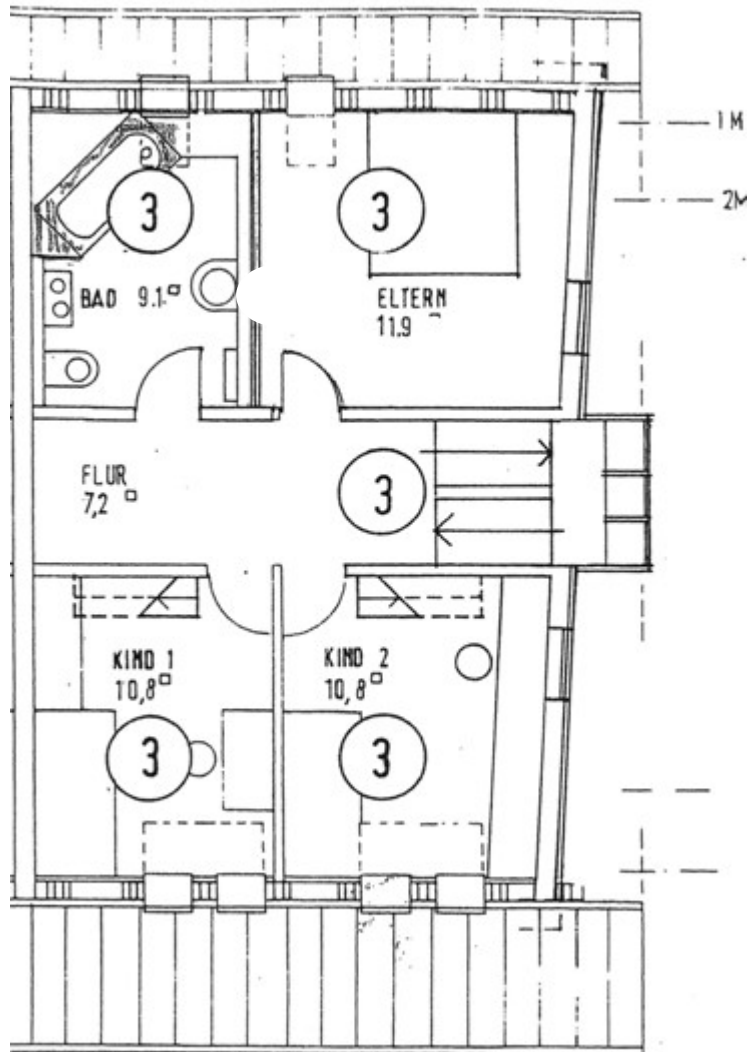


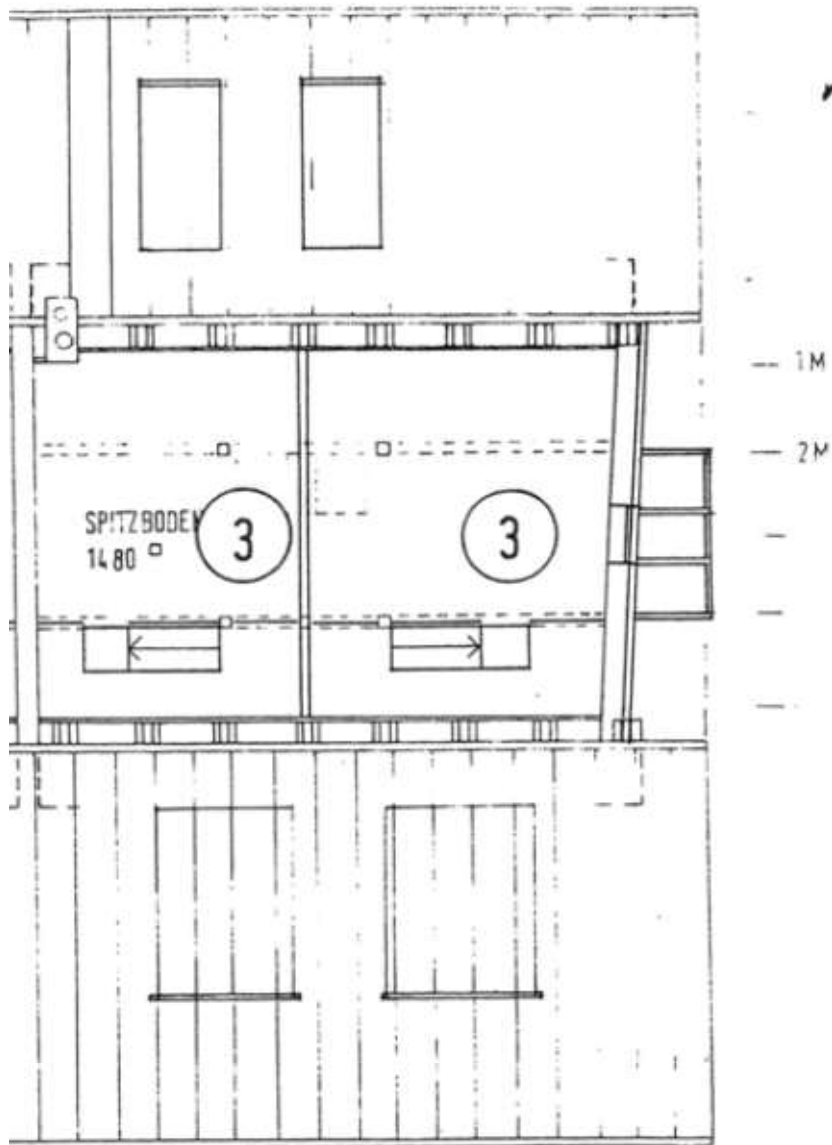
GW.166 - Interne Objektnummer ••• 4-5 Zi. Whg. ••• 71229 Leonberg-Höfingen  
Grundriss OG



GW.166 - Interne Objektnummer ••• 4-5 Zi. Whg. ••• 71229 Leonberg-Höfingen  
Grundriss DG



GW.166 - Interne Objekt Nummer ••• 4-5 Zi. Whg. ••• 71229 Leonberg-Höfingen  
Grundriss II. DG



GW.166 - Interne Objektnummer ... 4-5 Zi. Whg. ... 71229 Leonberg-Höfingen  
Wohnflächenberechnung

Wohnung 3

-----

2.OG

- Wohnen	18,80 m <sup>2</sup>	18,80 m <sup>2</sup>
- Küche	16,20 m <sup>2</sup>	16,20 m <sup>2</sup>
- Bad/WC	4,04 m <sup>2</sup>	4,04 m <sup>2</sup>
- Garderobe	3,04 m <sup>2</sup>	3,04 m <sup>2</sup>
- Flur	7,20 m <sup>2</sup>	7,20 m <sup>2</sup>
- Treppe	4,58 m <sup>2</sup>	--
- Balkon	5,37 m <sup>2</sup>	2,68 m <sup>2</sup>

DG

- Eltern	16,54 m <sup>2</sup>	13,77 m <sup>2</sup>
- Kind 1	11,19 m <sup>2</sup>	9,90 m <sup>2</sup>
- Kind 2	12,70 m <sup>2</sup>	11,10 m <sup>2</sup>
- Bad	7,80 m <sup>2</sup>	6,90 m <sup>2</sup>
- Treppe	7,20 m <sup>2</sup>	--
- Flur	8,45 m <sup>2</sup>	8,45 m <sup>2</sup>
- Galerie	25,60 m <sup>2</sup>	14,30 m <sup>2</sup>

---

Summe	148,71 m <sup>2</sup>	116,38 m <sup>2</sup>
-------	-----------------------	-----------------------